



Presentation of the trusted
thematic data repository

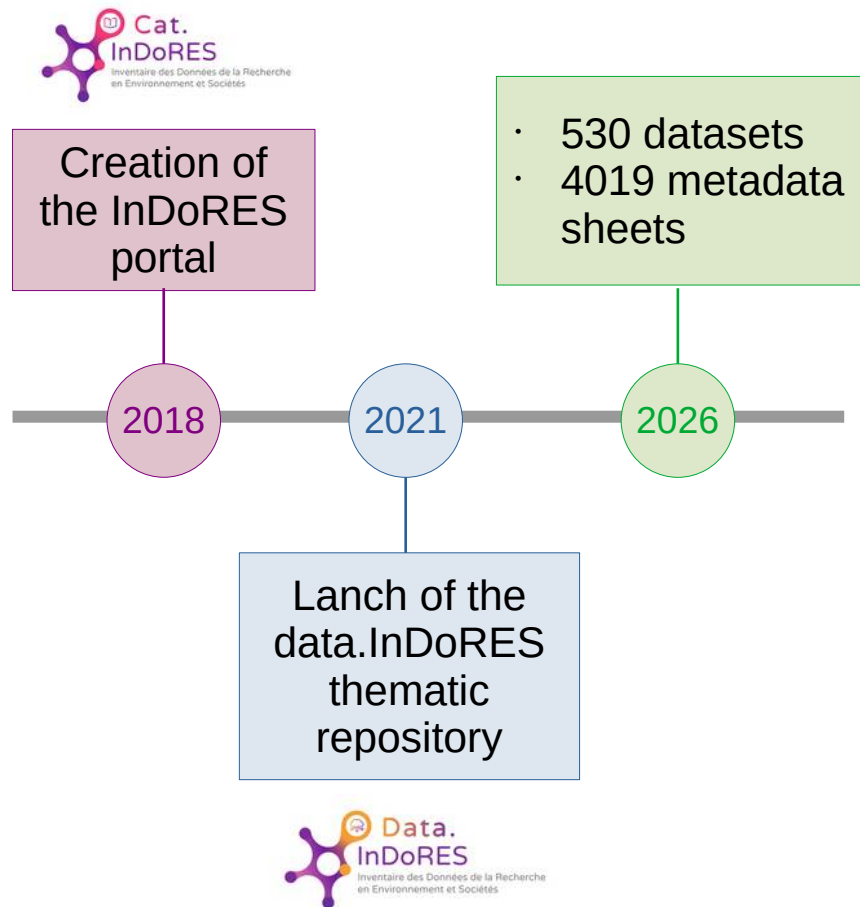
data.InDoRES

(Inventaire des Données de la Recherche
en Environnement et Sociétés)



CURATHON « Osterputz 2026 » (Le printemps de la Donnée & ADELE Helpdesk)
2026-05-05, MISHA, Strasbourg
Lauriane Kuhn (SCIGNE platform, IPHC, Strasbourg)





- Team :
Amandine Hénon
Noémie Tomadini
Naïma Khrouz
(UAR 2047 DoHNEE)



- Partnership with the 'Centre de Calcul' (IN2P3)
- 97 InDoRES local contacts
- Animation / communication :
<https://www.indores.fr>
contact@indores.fr
ML [RéférentsOpenDoRES]
OpenDoRES newsletter
Resana community
Caf'nDoRES (1x/quarter)

MISSION

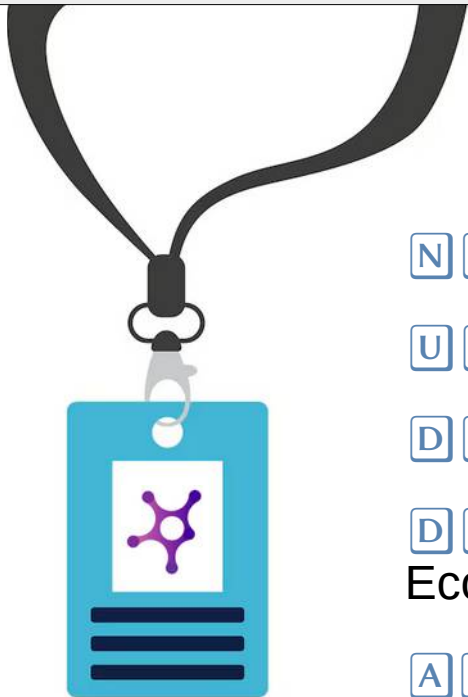
- Support and guidance for selecting a license and/or a repository
- Tools for depositing research data in data.InDoRES
- Advice on best practices for describing data and metadata
- Support for opening research source codes and software
- Guidance on managing and structuring data

- › InDoRES Catalog
- › Project metadata : context of acquisition & production
- › INSPIRE themes (EU)
- › Links to associated datasets



- › InDoRES Repository
- › Dataverse technology (laboratory, long-term monitoring project, ...)
- › Dataset-related metadata
- › Embargo, DOI, versions, ...





N A M E : InDoRES.....

U R L : <https://www.indores.fr>.....

D I S C I P L I N E : Environmental Sciences

D I S C I P L I N A R Y F I E L D S :
Ecology, Environment, Bio-archeology

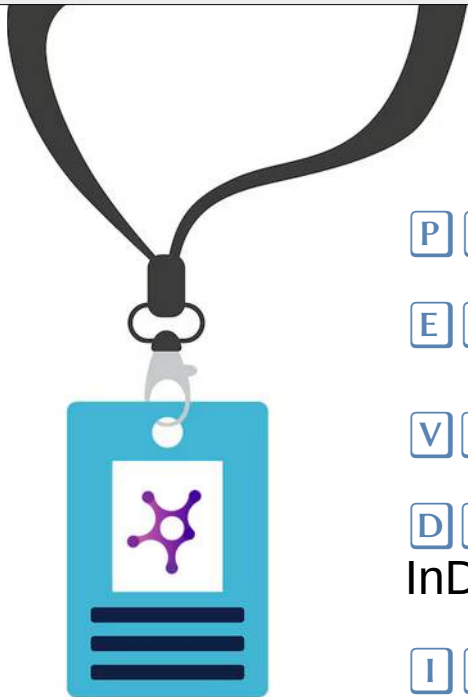
A C C E P T E D D A T A :
Environmental, ecological and geographical data

Data at the intersection of (SHS) and Ecology

S U P P O R T I N G I N S T I T U T I O N S :
CNRS – Ecologie & Environnement

MNHN (Museum National d’Histoire Naturelle)

Presentation of the trusted thematic repository data.InDoRES



P E R S I S T E N T I D E N T I F I E R : DOI.....

E M B A R G O : yes

V O L U M E L I M I T : 5Go per file (80Go dataset)

D A T A C U R A T I O N :
InDoRES team, InDoRES local contact (data completeness)

I N F R A S T R U C T U R E S U S T A I N I B I L I T Y :
Supported by the 2 supervising institutions, partnership CC-IN2P3 (Lyon)

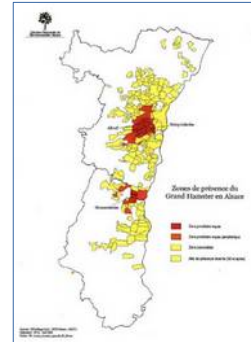
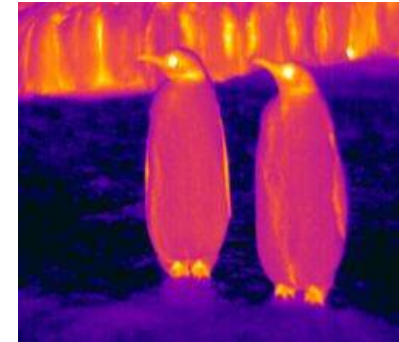
R E M A R K S :
Harvested by recherche.data.gouv, EasyData, PNDB, EOSC
Authentication via EduGAIN or independant account
Sandbox available for testing

Presentation of the trusted thematic repository data.InDoRES



Environment
& Societies

- **Observation data :**
species occurrence, photos, biometry & morphometry, behavior, interaction (networks), ...
- **Analytical data :**
*biochemistry (enzymatic assays, molecular markers, ...)
environmental chemistry (pollutants, nutrients, ...)
microbiology (16S sequencing, metagenomics, eDNA, ...)*
- **Sensor data :**
*in situ (meteorology, hydrology, soil, air quality)
remote sensing (satellites, drones, camera traps, ...)*
- **Modeling & simulation data :**
population dynamics, species distribution, ...
- **Socio-economic data :**
land use, surveys, management costs, ...
- **Monitoring data :**
networks (EEE, pollution, ...), real-time alerts (wildfires, floods, ...), ...



The Dataverse technology

The Dataverse Project logo is at the top. Below it, the text reads "Open source research data repository software". There are four main sections for different user groups: Researchers, Journals, Institutions, and Developers, each with a brief description of their benefits. At the bottom, there is a world map titled "DATVERSE REPOSITORIES - A WORLD VIEW" showing 125 installations across various continents.

<https://dataverse.org/>

➤ DATAVERSE Technology :

Developed at the IQSS (Institute for Quantitative Social Science)
Dataverse 1.0 (2006) > 6.0 (2023)

Team: developers, UX/UI designers, metadata specialists, curators
125 communities
~ 500.000 datasets



-  Installations
-  Collections
-  Datasets
-  Files

A screenshot of the data.inDoRES website interface. It shows the site's header with navigation links, a search bar, and a list of datasets. One dataset is highlighted, showing its title, date, and a brief description.

The data.InDoRES workspace

- Dataverses / Sub-dataverses
- Datasets
- Files

- Status labels

- Roles :
Administrator
Curator
Contributor
Member
Downloader

- FR/EN
- User Guide
- « My data » workspace
- Notifications
- Contact

The screenshot displays the 'Compte - data.InDoRES' page on the Dataverse platform. At the top, there are navigation links for 'Recherche', 'Guide d'utilisation', 'Support', 'Français', and 'Lauriane Kuhn'. Below the header, the user's account name 'data.InDoRES' is shown. The main content area features a search bar with the placeholder text 'Rechercher mes données ...' and a 'Chercher' button. To the left, there is a sidebar with filters for 'Dataverses (6)', 'Ensembles de données (12)', and 'Fichiers'. Under 'Statut de publication', there are checkboxes for 'Publié (10)', 'Non publié (8)', 'Version provisoire (8)', 'En révision (3)', and 'Retiré (0)'. Under 'Rôles', the 'Administrateur' role is selected. The main content area displays search results, with the first result being 'Data for the article: "Monitoring reproduction in cryptic small mammals; Using body temperature to identify parturition in an endangered rodent"', published on Apr 8, 2026, by the Département Ecologie Physiologie Ethologie. The second result is 'Replication Data and R code for: Early-life adversity modulates growth trajectories and red blood cell mitochondrial metabolism in king penguin chicks', published on Mar 31, 2026, by ECENERGY #119: Long-term observatory of king penguin ecophysiology, behaviour, growth and breeding success.

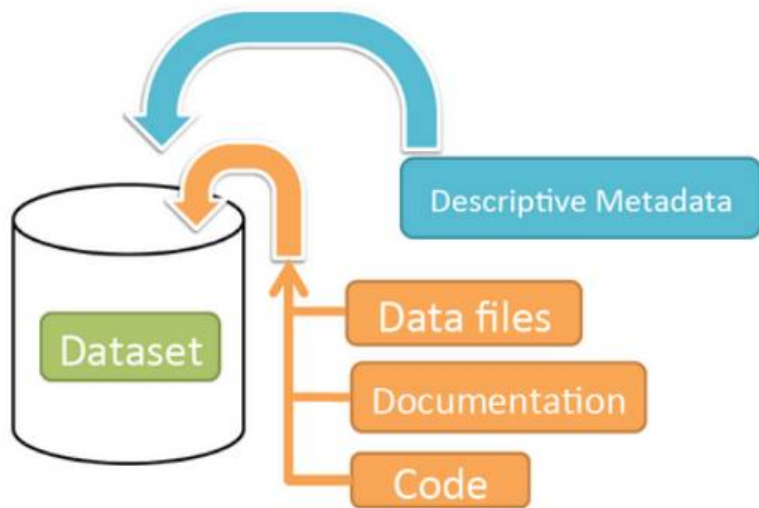
Example of a data.InDoRES dataset

The screenshot shows a dataset page on the data.InDoRES platform. The dataset title is "Data for the article: 'Monitoring reproduction in cryptic small mammals; Using body temperature to identify parturition in an endangered rodent'". The description states that the dataset contains material from an article by Gérard, Timothée; Chignec, Hugo; and Habold, Caroline (2026), detailing reproductive trials and parturition details for cryptic small mammals. The dataset includes files such as "Data - Laboratory - Reproductive trials and parturition details.csv" and "READ_ME.txt". The page also features a search bar, filters, and a list of files with download options.

A dropdown menu is shown, listing various options for accessing the dataset. The options include: "Fichiers (téléverser)", "Métadonnées", "Conditions d'utilisation", "Autorisations", "URL privée", "Vignettes + Widgets", and "Retirer l'ensemble de données de la diffusion". A green arrow points from the dataset page to this menu.

- Dataset name
- DOI
- Description
- Subject
- Keywords
- Related publication
- License

- Files : CSV, TXT, PDF, ...
- Metadata : mandatory / optional
- Terms of use : CC-BY 4.0
- Versions



<https://guides.dataverse.org/>



- › Title (text)
- › Author(s) : name, affiliation, schema, identifier
- › Contact : name, affiliation, email
- › Description (text)
- › Subject (list)
- › Keywords : term, thesaurus (open), url
- › License (list) : CC-BY 4.0 (default)
- › Access conditions : restrictions

- › Sub-Title
- › Related publication
- › Remarks
- › Language(s)
- › Producer
- › Production date
- › Production location
- › Contributor
- › Funder
- › Distributor
- › Depositor
- › Deposit date
- › Time period covered
- › Collection date
- › Data type
- › Series
- › Software
- › Related documentation
- › Related datasets
- › Data sources
- › Source origin
- › Access to sources

➤ RESOURCES :

User Guide (FR/EN)

Depositor to-do list

Read-Me file guidelines

Key concepts

GO FAIR

DORANum Resources

RDA Webinars

DMP Opidor, Cat Opidor

Creative Commons Licenses

Toolbox (Amnesia, Archifiltre, Exiftool, OpenRefine,

SOS-PGD, DMP-Opidor)

Video tutorials

(<https://www.canal-u.tv/chaines/bbees>)

Resana (documentation for local contacts)



Comment bien documenter ses données - Le fichier README -

Un fichier README contient des informations descriptives qui résument le contenu d'un jeu de données tout en offrant une documentation expliquant la manière dont ces informations sont structurées et organisées. Placé à la racine du répertoire de votre jeu de données, un README est souvent le premier élément qu'un visiteur verra lors de la consultation de votre jeu de données.

Aussi, pour que vos données soient compréhensibles et réutilisables par votre « futur vous-même », vos collègues ou d'autres scientifiques, l'élaboration d'un fichier README paraît essentiel pour que l'utilisateur puisse comprendre rapidement l'objectif et l'organisation de votre jeu de données.

Vous trouverez ci-contre quelques bonnes pratiques à respecter afin de garantir au mieux la complétude des informations à inclure dans votre README.

Différents modèles, utilisables et modifiables à votre convenance, sont disponibles en ligne :

- ✓ RdG : Modèle de README (data.gouv.fr)
- ✓ Dryad : data.dryad.org/docs/README.md
- ✓ Cornell University : Guide to writing "readme" style metadata - Cornell Data Services
- ✓ 4TU.ResearchData : Data collection policy (4tu.nl)



Tomadini N. & Hénon A., 2024 - Comment bien documenter ses données - Le fichier README -

Quelles informations ?

- Les noms de l'auteur/trice et des co-auteurs/trices de l'étude
- Les dates de collecte des données
- Une courte description de la méthodologie et des outils utilisés pour la collecte et le traitement des données
- Une description de la hiérarchie du répertoire, du type de données qu'il contient et de la convention de nommage des fichiers
- Une liste complète de tous les titres/ codes/ abréviations et conventions utilisées dans les fichiers.
- Les conditions de partage et d'accès (licence). Pour data.InDoRES indiquez « Ce jeu de données est sous licence CC-BY 4.0 »

Bonnes pratiques

Format de diffusion - Un README est généralement diffusé dans un format ouvert tel que le texte plein (txt) ou en markdown (md).

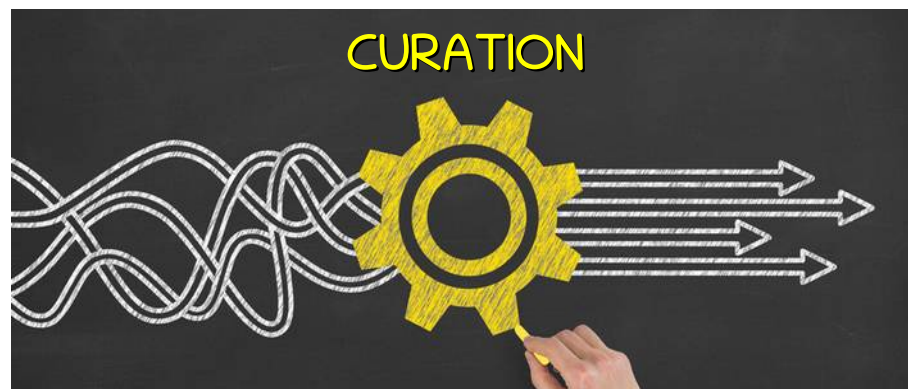
Structure - Si vous devez créer plusieurs fichiers README pour un même ensemble de données, optez pour une structuration identique de vos fichiers afin que l'utilisateur puisse retrouver plus facilement les informations dont il a besoin.

Dates - Utilisez des standards internationaux d'écriture des dates tels que W3C/ISO 8601 qui permet une communication claire et efficace entre systèmes informatiques et applications selon le format suivant : YYYY-MM-DD ou YYYY-MM-DDThh:mm:ss.

Role of the local data.InDoRES referent



- Anticipate the deposit !!!
- Sort and structure the data
- Metadata description by producers
- Which dataverse ?
- Link datasets
- Pairing for beginners (sandbox)
- Annual seminar



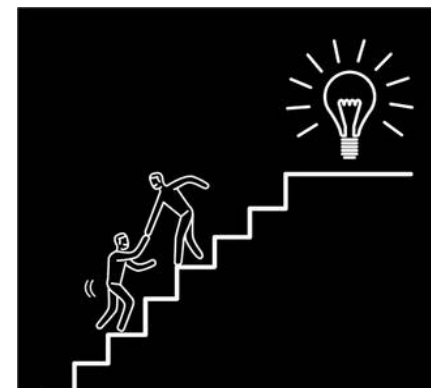
- Make minor corrections (format, syntax, spelling)
- Suggest improvements to the depositor for the dataset

File formats (.csv, .txt, .pdf, .png, .wav, .GML, code ...)
ReadMe file

Data quality & completeness (units, acronyms, equipment, software, GPS, ...)
File organisation

Metadata : mandatory + optional (encouraged)
Advice & Thesaurus search
GDPR compliance

License + redistribution conditions if data is reused



- Managing modifications & versions
- Private Url (reviewers)
- Embargo management
- Dataset publication
- Link with cat.InDoRES
- Long live the data !

Example of a cat.InDoRES project

Filtres actifs

any CGS

Filter

Disponible via

- Service de téléchargement
- Service de visualisation

Thèmes INSPIRE

- Installations de suivi environnemental (1)
- Habitats et biotopes (1)
- Répartition des espèces (1)

Mots-clés

Filter

- Canada (1)
- Environmental monitoring facilities (1)
- Habitats and biotopes (1)
- Individual life histories (1)
- Individual-based monitoring (1)
- Long-term monitoring (1)
- Long-term monitoring in Ecology and Evolution (1)
- Long-term monitoring of living organisms (1)
- Long-term study in Ecology and Evolution (1)
- Pedigree (1)

plus

Territoires

- North America (1)


Organisations

- CNRS, Institut Pluridisciplinaire Hubert Curien (1)

Fréquences de mise à jour

- Lorsque nécessaire (1)

CGS project: long-term study on the ecology, physiology, behavior and evolution...



The long-term project consists in the annual monitoring of a population of Columbian ground squirrel (*Urocyon columbianus*) in the Rocky Mountains of southwestern Alberta, Canada. Collaborative research between the CNRS, the University of Calgary and Auburn University allows for the generation of comprehensive data..

CNRS, Institut Pluridisciplinaire Hubert Curien

Mise à jour continue

Retour à la recherche

Télécharger - Mode affichage -

Mise à jour continue

CGS project: long-term study on the ecology, physiology, behavior and evolution of Columbian ground squirrels

SEE LITE : suivis à long terme du vivant

The long-term project consists in the annual monitoring of a population of Columbian ground squirrel (*Urocyon columbianus*) in the Rocky Mountains of southwestern Alberta, Canada. Collaborative research between the CNRS, the University of Calgary and Auburn University allows for the generation of comprehensive data on individual phenology (dates of emergence, reproduction, weaning), reproduction (sex ratio of litters produced), and morphometry (individual structural size and mass). Data is systematically collected since 1992, and each year from ground squirrel emergence of hibernation to weaning of the young of the year. A population pedigree (paternalities) was established since 2003 (via genetic analyses of parentage). Since 2013, a physiological monitoring (not continuous) of individual condition and stress (glucocorticoid hormones, plasma glucose levels, telomeres, oxidative stress) (except 2020-21, due to COVID) runs parallel to behavioral monitoring (observations and use of bio-loggers). Wider-scale monitoring of the ecosystem was started in 2022 (vegetation, weather, presence of other species via camera traps).

This long-term study of Columbian ground squirrels was initiated by Jan O Murie (University of Alberta) in 1992 in the Rocky Mountains of southwestern Alberta. From 1999-2020, F. Stephen Dobson of Auburn University (USA), took over Murie's long-term study on Meadow B, subsequently passed on progressively from 2013 present to Vincent A Viblanc (CNRS, French National Research Center).

Étendue temporelle
31-03-1992 →

Découvrir les données



Canada

Links

	01 - CGS project	Ouvrir le lien
	Website on the Columbian ground squirrel long-term study	
	02 - Columbian ground squirrel long-term research project	Ouvrir le lien
	InDoRES dataverse associated with the Columbian ground squirrel long-term research project	
	03 - Au cœur du réseau - Querelles de voisinage chez les écureuils terrestres - 26 min	Ouvrir le lien
	Science lay audience on a social stress project led within the CGS long-term research project (French)	
	04 - To the heart of the social network: Neighbourhood quarrels of the Columbian ground squirrel	Ouvrir le lien
	Science lay audience on a social stress project led within the CGS long-term research project (English)	






ISO-19115


ISO-19139



- › Title
- › Author(s) : name, affiliation, role, function
- › Contact(s) : name, affiliation, role, function
- › Description (text)
- › Metadata language
- › Creation date + Update frequency & date + Status
- › 11 Thesaurus : GEMET, Biodiversity, ...
- › Keyword(s) (free-text)
- › INSPIRE theme(s) (list)
- › Temporal coverage
- › Data quality (text)
- › Distribution format (list)
- › Legal Conditions for Access and Use
- › Associated documents : name, description, url


- › Geographic extent : name, coordinates (N/S/E/W)
- › Projection system
- › Spatial resolution
- › Illustration

 **CGS project: long-term study on the ecology, physiology, behavior and evolution...**



The long-term project consists in the annual monitoring of a population of Columbian ground squirrel (*Urocitellus columbianus*) in the Rocky Mountains of southwestern Alberta, Canada. Collaborative research between ...

CNRS, Institut Pluridisciplinaire Hubert Curien



Key Takeaways from InDoRES ...



Replication Data and R code for: Evaluating the links between...

This file contains the replication data and R code for the study: "Evaluating the links between heterophil-to-lymphocyte ratio, foraging effort and breeding success in two penguin species" published in Marine Biology, by ...

Université de Strasbourg, CNRS, IPHC UMR 7178, Strasbourg, F-67000

Finalisé

CGS project: long-term study on the ecology, physiology, behavior and evolution...

The long-term project consists in the annual monitoring of a population of Columbian ground squirrel (Urocitellus columbianus) in the Rocky Mountains, southwestern Alberta, Canada. Collaborative research between ...

CNRS, Institut Pluridisciplinaire Hubert Curien

Mise à jour continue



Dr V. Viblanc Dr C. Saraux



01_CGS project
Website on the Columbian ground squirrel long-term study

02_Columbian ground squirrel long-term research project
InDoRES dataverse associated with the Columbian ground squirrel long-term research project

03_Au cœur du réseau - Querelles de voisinage chez les écureuils terrestres - 26 min
Science lay-audience on a social stress project led within the CGS long-term research project (French)



ACKNOWLEDGMENTS

- InDoRES Team : Amandine Hénon, Noémie Tomadini, Naïma Khrouz (UAR 2047 DohNEE)
- InDoRES Users: Département Ecologie Physiologie Ethologie (IPHC, Strasbourg)
- SCIGNE platform (IPHC, Strasbourg) : Open, secure, and seamless scientific computing for everyone
- ADELE Helpdesk